



K-CHANCE

NEW

MS-2261 SERIES

3-NEEDLE FEED-OFF-THE-ARM
DOUBLE CHAIN-STITCH MACHINE



Cheng-Yih Sewing Machine Enterprises Co.,Ltd.

SPECIFICATIONS:

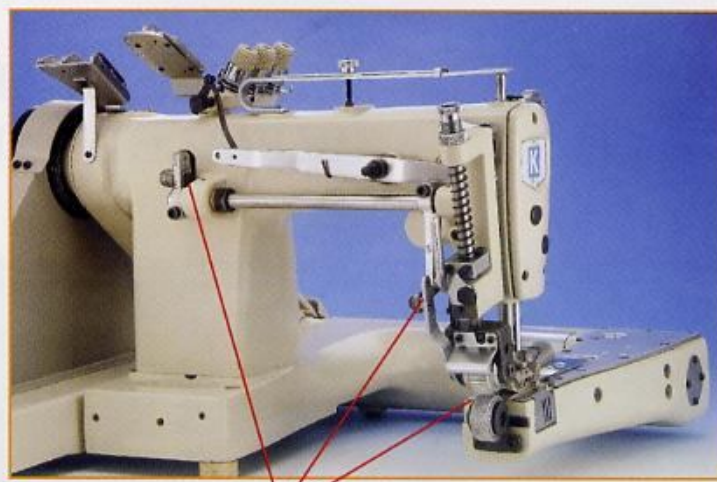
Model	MS-2261	MS-2261-XHP	MS-2261-EHP
Material (縫布種類)	Standard (一般)	Medium-heavy (中厚)	Extra-heavy (特厚)
Sewing speed	3600 SPM		3000 SPM
Stitch length	1.4mm ~ 4mm	1.4mm ~ 4mm	5.5mm
No. of needle	3	3	3
Needle gauge	1/8 1/8 (6.4mm)	1/8 1/8 (6.4mm) 5/32 5/32 (8.0mm)	1/8 1/8 (6.4mm) 5/32 5/32 (8.0mm)
Needle bar stroke	33.4mm	36mm	
Minimum tube size	190mm		
Puller device	None	small-teeth puller	large-teeth puller

Features:

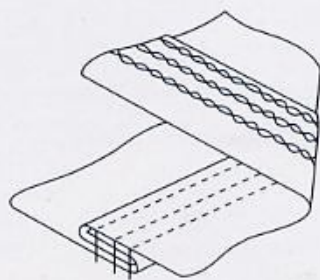
1. Adjustable powerful puller device enables the machine to consistently stitch special in extra-heavy material.
2. Available with adjustable moveable needle guard for preventing puckering as well as forming beautifully finished seams.
3. Stitch length adjustment by button.
4. Stitch length : 5.5 mm

■ 特點

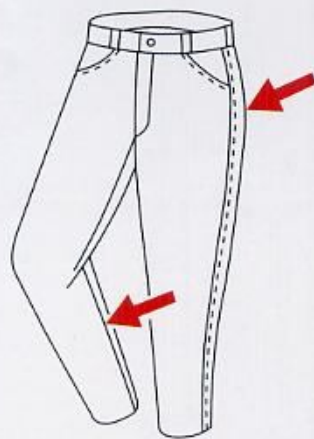
1. 本臂式三針雙鏈縫紉機具有可調式強力拉輪裝置用於特厚布料縫跡整齊
2. 本縫機具有可調式單獨護針檔可穩定針位
3. 按鍵式調整粗細針碼
4. 縫距最大5.5mm



Adjustable powerful puller device
可調式強力拉輪裝置



MS-2261
三針 (3 NEEDLES)



CORRECT OPERATION : 2261 series

Needle (使用針)	Thread (使用線)		Motor	Frequency	Sewing speed	Motor pulley	Belt size
	Upper thread	Lower thread					
UY 128 GAS-NY			1/3HP 2-pole	50HZ	3100	85	M-43
# 16	Cotton # 50	Cotton # 60			3600	95	M-44
# 19	Cotton # 30	Cotton # 50	1/2HP 2-pole	60HZ	3100	70	M-41
# 22	Cotton # 20	Cotton # 30			3600	80	M-42